

# Diabetes Roadmap to Health

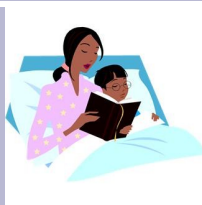
## Pediatric Intensive Care Unit



### Goal: Stabilization

- Begin to feel better
- Move to general pediatrics when you can eat your first meal without problems

## General Pediatrics



### Goal: Self Management & Education

- Ongoing medical care
- Learn basic skills to care for your diabetes
- Practice skills learned
- Go home and return to school with support from outpatient services

## Outpatient



### Goal: Continued Support for Self Management

- Daily check-ins with CDE or doctor until first office visit
- Return to school within 1 - 3 days
- Office visit with CDE or doctor within seven days of going home
- Office visit with CDE or doctor every three months, which may include:
  - Social work
  - Registered dietician
  - Physical therapist
- Connect with diabetes community support including:
  - Diabetes support groups
  - Diabetes camps
  - Diabetes classes
  - Diabetes websites
  - Counseling services, if needed
- Ongoing education and support
- Assistance with transition to adult care

## Your Treatment Team



PICU Doctor



Endocrine Doctor



Nurse (RN)



Child Life



General Pediatrics Doctor



Registered Dietician (RD)



Physical Therapy (PT)



Certified Diabetes Educator (CDE)



Case Manager



Social Worker (SW)



Pharmacy